



Reemplazo del cabezal de impresión

Substituição da cabeça de impressão

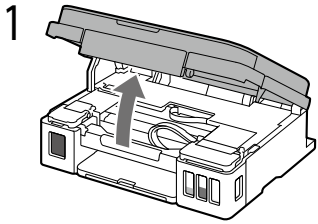
Replacing the Print Head



www.cla.canon.com/phd



Consulte el manual en línea para más detalles.

Consulte o manual on-line para mais detalhes.
See online manual for more details



2 Presione de manera sostenida o por 5 segundos.

El compartimiento de los cabezales de impresión se moverá hacia el extremo izquierdo.

Pressione e segure  ou  durante 5 segundos.



O compartimento da cabeça de impressão se moverá para a extrema esquerda.

Press and hold  or  for 5 seconds.

The print head holder will move to the far left.

3 Nuevamente presione de manera sostenida o por 5 segundos.

El compartimiento de los cabezales de impresión se moverá hacia el centro a la posición de reemplazo.

Pressione e segure novamente  ou  durante 5 segundos.

O compartimento da cabeça de impressão se moverá para a posição de substituição ao centro.

Press and hold  or  again for 5 seconds.

The print head holder will move to the center replacement position.

4 Asegúrese de abrir las tapas de los tanques de tinta.

Certifique-se de abrir as tampas do tanque de tinta.
Be sure to open the ink tank covers.

IMPORTANTE

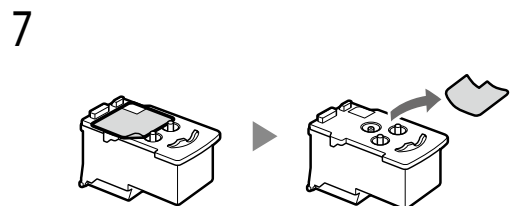
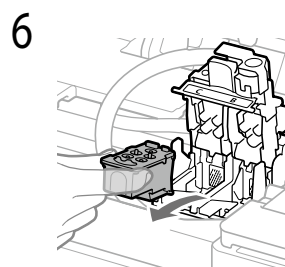
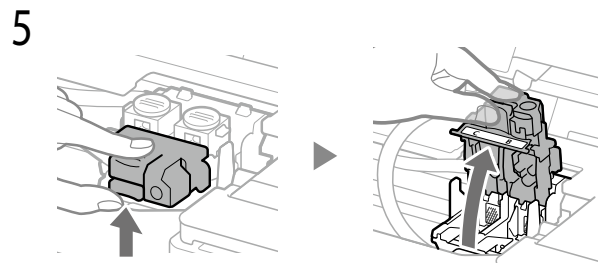
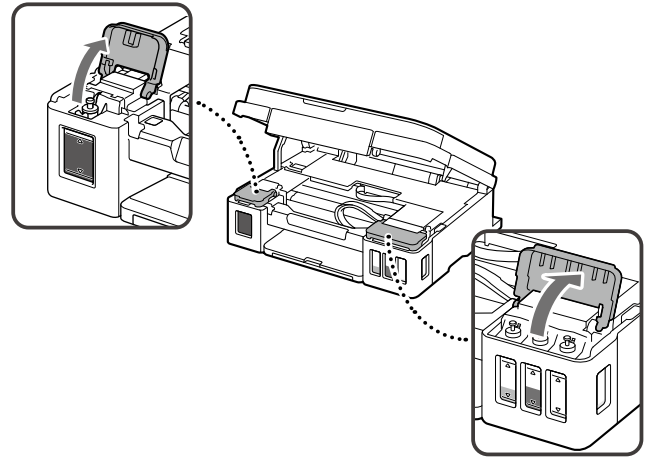
Las tapas de los tanques tienen que abrirse o la impresión no se realizará correctamente.

IMPORTANTE

Você deve abrir as tampas ou a impressão não será executada corretamente.

IMPORTANT

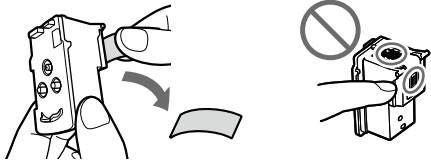
You must open the covers or printing will not be performed correctly.



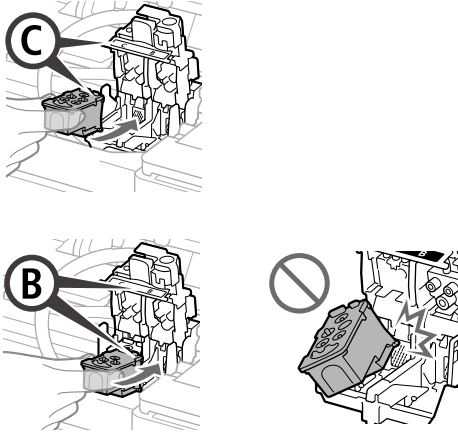
▶ **Ir a la siguiente página.**

Vá para a página seguinte.
Go to the next page.

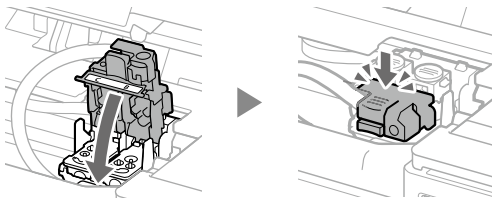
8



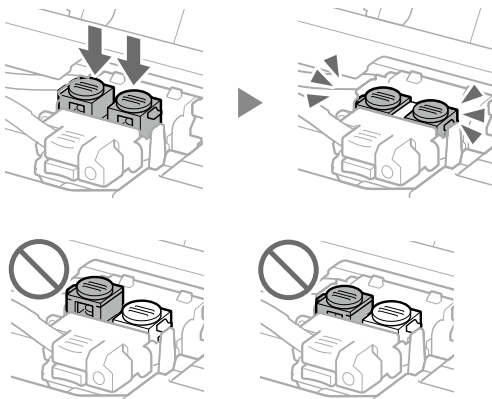
9



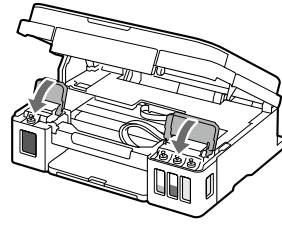
10



11



12



13

