

**Canon**

## **Océ VarioStream 7000 Series** The tool makes the difference



INTEGRATED CONTINUOUS FEED  
PRINTERS FOR EVERY DEMAND

# Océ VarioStream 7000 Series

The tool makes the difference



## KEY FEATURES

- Speed, quality, and media choice flexibility
- Enhanced Print Quality technology
- Innovative engineering in paper transport and developer station
- Performance features for continuous operation



## Océ VarioStream 7000 Series

Integrated continuous feed printers



### **PRODUCTION-CLASS PERFORMANCE THAT DELIVERS MORE**

When it comes to producing documents in today's dynamic business world, few enterprises can afford to invest in single-purpose printing systems. That's why we developed the Océ VarioStream® 7000 Series – a series of versatile web printers designed for the challenges of every business environment – from the corporate datacenter to the commercial printroom floor, all on a single platform.

# Integrated Continuous Feed Printers

## Speed, quality, and media choice flexibility

### MAXIMUM FLEXIBILITY

Building on a history of technological achievement in transaction and on-demand printing, the Océ VarioStream 7000 Series provides enterprises everywhere with a flexible, modern series of continuous feed digital printers for virtually every application challenge. Combining established standards with groundbreaking innovation in an advanced technology platform, the Océ VarioStream 7000 Series offers an unrivaled combination of power, adaptability, and flexibility.

### THE RIGHT SPEED FOR EVERY REQUIREMENT

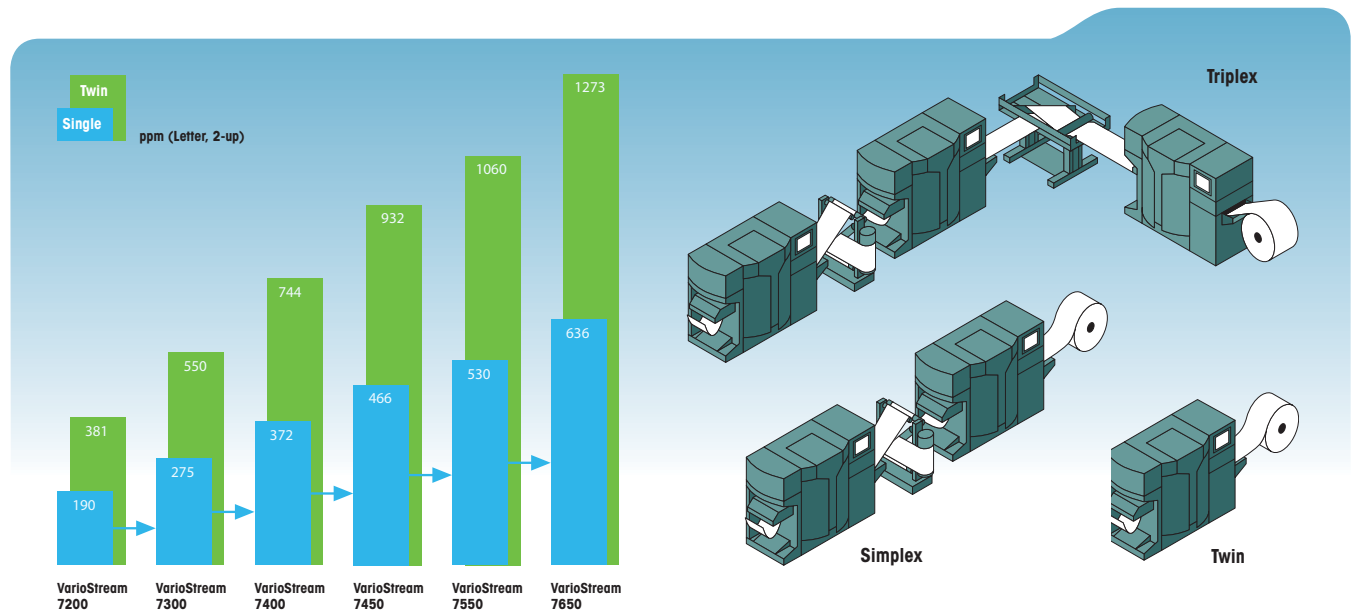
When you invest in an Océ VarioStream 7000 digital press, you're selecting a system that grows and evolves along with your business. The entry-level model, the Océ VarioStream 7200 system, produces 190 letter images per minute in simplex mode and 381 letter images per minute in a twin configuration. As your print volumes increase, you can upgrade the speed to keep pace – right up to 1,273 letter images per minute with the Océ VarioStream 7650 Twin system. For added versatility you can run both printers in the twin system independently.

### FITS IN YOUR ENVIRONMENT

Océ VarioStream 7000 systems can process native data streams in a wide range of formats, including AFP/IPDS, PCL, and Enhanced (E/C)

mode. Integrate the system with Océ PRISMA® workflow software and expand your data input choices, including PostScript and PDF. Océ PRISMA software components interface with leading IT platforms and print data. So, no matter where your data comes from – host systems, servers, or networks – you benefit from an integrated workflow.

Based on trusted Océ SRA® technology, the versatile system controller accepts and processes 240, 300, and 600 dpi input data. It automatically adjusts to the input resolution between jobs, within the same document, and even on the same page. As a result, you can use your resources exactly as they are – for example, your logo in 300 dpi quality, images at 600 dpi, and text in 240 dpi. Océ VarioStream 7000 systems output each element in the optimal quality, from the first page to the last.





## OPTIMAL QUALITY FOR EVERY REQUIREMENT

Like many print centers, perhaps your biggest challenge is handling a variety of different applications and quality requirements, with equally unpredictable schedules. To help you turn jobs around fast, versatile Océ VarioStream 7000 CX (convergence) models can switch seamlessly between transactional and high-quality graphics applications.

## DATA INTEGRITY

The Océ VarioStream 7000 system uses a patented data integrity system that assures the correct page sequence and correct integrity of front and back page data, and it will alert the operator and stop the job if non-sequential printing is detected. Instead of intrusive barcodes, the industry-leading system uses a small mark placed at the edge of the page. This approach reduces the paper, trimming, and disposal costs associated with traditional barcode integrity systems. The result: lower costs and higher data security.

## ENHANCED PRINT QUALITY TECHNOLOGY

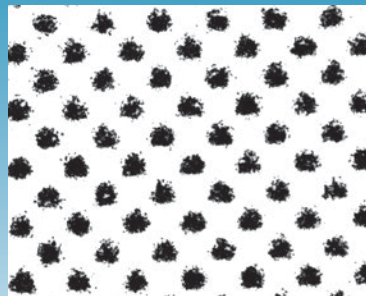
Unlike conventional digital printers that transfer toner using an electrostatic charge generated by corona wires, Océ VarioStream systems come standard with an Enhanced Print Quality (EPQ) feature that uses a transfer roller to help ensure print quality and consistency.

## EPQ Benefits

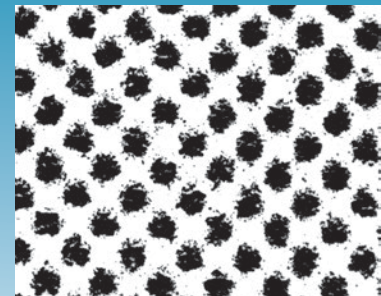
- Excellent print quality in text, line drawings, and continuous-tone images
- Better halftone production with precise dot placement and shape
- Lower dot gain and sharper edges through ultra-precise toner transfer
- No disparity in print images on recto and verso sides

## A NEW BENCHMARK FOR QUALITY

Imagine 1,273 letter pages per minute, each page crisp and sharp. Imagine superb print quality for text, graphics, and halftone images and total consistency between recto and verso page images. Too much to ask for? Not with the Océ VarioStream 7000 Series. The EPQ toner transfer technique provides high print quality, delivering consistently excellent output—especially ultra-thin lines, patterns, and halftone images. The Océ VarioStream 7000 system delivers high print quality even at the super-fast speeds that are routine in any high-volume print operation.



With EPQ Technology

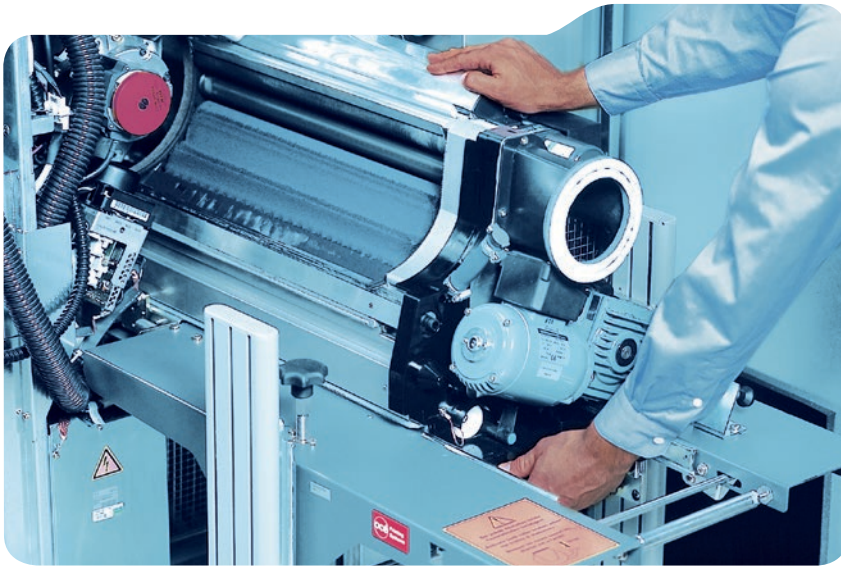


Without EPQ Technology



## The Tool Makes The Difference

Innovative paper transport,  
developer stations, and operation



### AS FLEXIBLE BIMODAL PAPER TRANSPORT

Engineered to process paper with and without feedhole margins, Océ pinless technology expands your choice of media options. Like an offset press, the pinless transport system works without tractor feed units, using a friction drive to convey media through the system. The Océ VarioStream 7000 system can handle forms without the feedhole margins once required by web-fed digital presses. The result? Lower paper costs, flexibility to handle different paper weights, and secure, reliable processing at top speeds.

- Reduced paper costs – paper without feedhole margins costs less
- Flexibility to handle different paper weights – below 60 gsm or up to 160 gsm
- Reliable processing and flexibility to handle a variety of substrates
- Secure paper transport – even at print speeds up to 1,273 letter pages per minute

### QCDS TECHNOLOGY

Change the type of toner in just a few easy steps? Print one job with the standard black. Then run a few jobs with MICR, and then switch back to standard toner. It's all business as usual with the Quick Change Developer Station (QCDS®). Just swap the stations and you're ready to run.

- Flexibility to switch to another toner
- Handle more applications with just one system
- Expanded toner choices

# Océ VarioStream 7000 Series

Performance features for continuous operation



## RELIABLE AND EASY TO USE

Engineered for heavy-duty professional operation, Océ VarioStream 7000 systems are built with robust, reliable components to ensure a long service life. Even seasoned professionals appreciate a simple, intuitive operator interface that keeps workflows moving, minimizing the system downtime that results from invalid or incorrect user input.

The Océ VarioStream 7000 graphical user interface ensures ease of operation. Key information is clearly and intuitively displayed on the screen for easy handling that accelerates system setup, helps prevent potential operator errors, and makes the entire print operation more ergonomic. What's more, with the Océ VarioStream 7000 GUI, operators can control multiple systems from a single point of control in a convenient, centralized location like the prepress room.

## STREAMLINED DIGITAL WORKFLOW WITH OCÉ PRISMA SOFTWARE

For streamlined document and workflow management, you can integrate your Océ VarioStream 7000 system with Océ PRISMA adaptive workflow management software. Océ PRISMA unifies operations management with integrated support for multi-format, multi-vendor document systems. As a result, you have complete control to manage jobs, optimize device utilization, and maximize the performance and cost-effectiveness of your operation – independent of system, location, or print device.



## ONE COMPANY, ONE VISION

Canon unites the power of Océ Production Printing Systems with the strength of Canon.

Look to Canon for all your production needs:

- **Enterprise Printing** in the office and corporate print room
- **Large Format Printing** of technical documentation, signage, and display graphics
- **Production Printing** for marketing service bureaus and graphic arts
- **Business Services** for document process outsourcing

For information and services, visit us at:

**[www.cla.canon.com](http://www.cla.canon.com)**

# Canon

Canon is a registered trademark of Canon Inc. in the United States and elsewhere. VarioStream, PRISMA, QCDS, SRA, and Océ are registered trademarks of Océ-Technologies B.V. in the United States and elsewhere. All other referenced product names and marks are trademarks of their respective owners and are hereby acknowledged.

© 2014 Canon U.S.A., Inc. All rights reserved.